

# 自动冲圆孔眼机

Hole Impacting Machine

(MB8016A)

## 使用说明书

Instruction Manual

**常州智谷机电科技有限公司**

CHANGZHOU WISDOM & VALLEY ELECTRICAL TECHNOLOGY CO., LTD

**在使用本设备之前请先阅读本使用说明书**

Please read the operation manual of the touch screen interface before using the device

**请将本使用说明书放在便于查阅的地方保管**

Please keep this operation manual of touch screen interface in convenient place for reference

版本信息/ Version

---

2022.04.03

**感谢购买 IMB 工业用缝纫机。**

**在使用此机器之前，请仔细阅读以下的说明，这样可以更好地帮到您了解此机器的相关操作。**

**这些说明是根据现行的条例明确阐述了正确的工作方法。**

Thank you for purchasing this industrial sewing machine from IMB

Before using this automatic unit, please read the following instructions, which will help you to

understand how the machine operates.

These instructions illustrate the correct working methods to comply with current regulations.

**在没有得到IMB授权许可的前提下，此说明书的任何部分是不可以被复制或转录的。说明书的内容可能被修改，而不需预先通知。**

No part of this manual may be copied or transcribed without requesting prior authorization from IMB

The contents of this manual may be subject to change without advance notification.

**我们将欣然接受各位提出的改进此说明书的任何建议和指示**

We are happy to receive suggestions and/or indications on ways we could improve this manual.

**本机介绍说明分为两部分，具体请参照《MB8016A-使用说明书》、《MB8016A-零件手册》。**

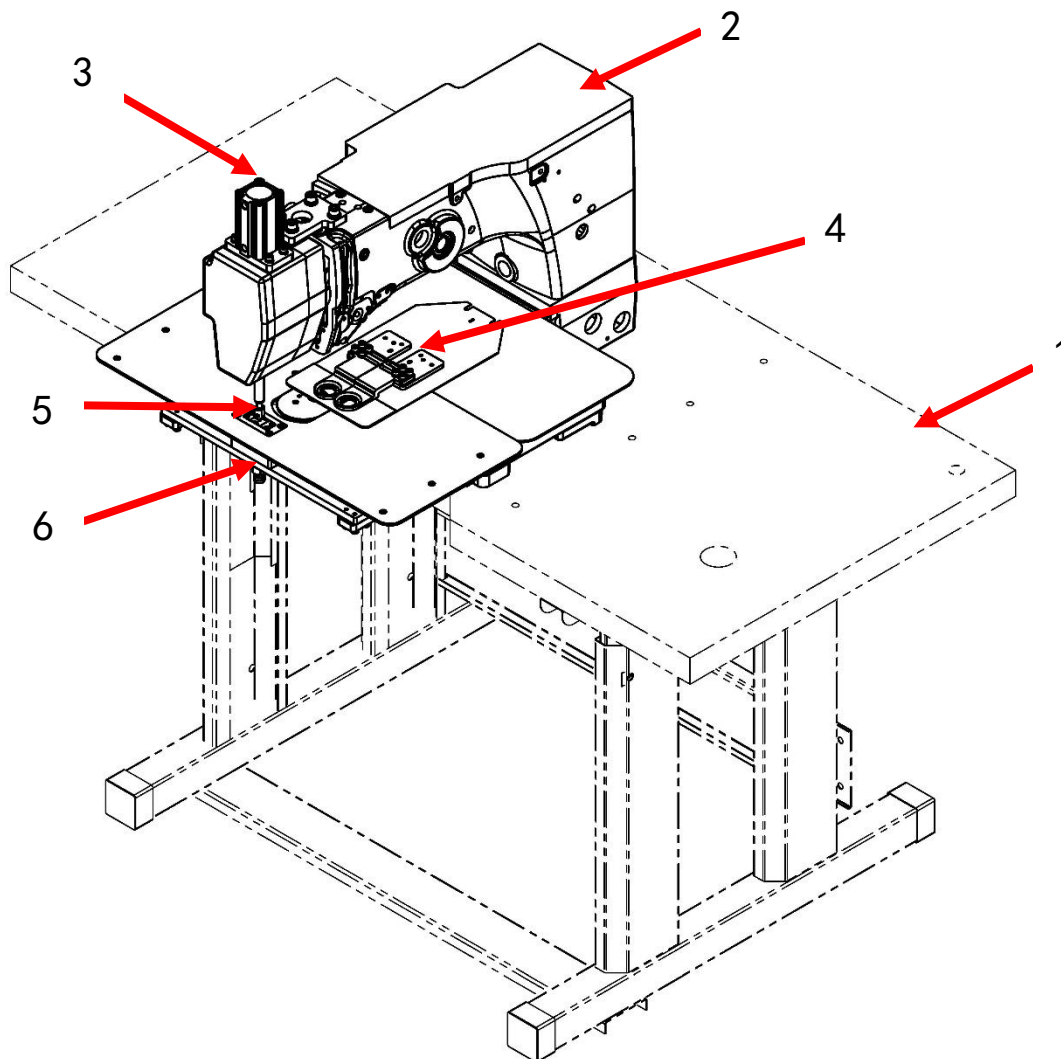
The introduction of this machine is divided into two parts. For details, please refer to 《MB8016A Operation manual》 and 《MB8016A Parts Manual》.

**ENGLISH**

## Catalog

1、 Basic information of the equipment.....	1
2、 Technical parameters of the equipment.....	2
3、 Safety precautions.....	3
4、 key function description.....	5
5、 Operating instructions.....	5
6、 Debugging method.....	5
6.1 Replacement of upper die holder and punch.....	5
6.2 Replacement of the lower die.....	6
6.3 Position adjustment of cylinder magnetic switch.....	7
6.4 Hole distance adjustment of feed assembly.....	8
7、 Electrical wiring.....	9
8、 Optional device.....	9
9、 Accessories box details.....	9
10、 Common problems and Solutions.....	9
11、 Daily maintenance requirements.....	9
12、 Knowledge product protection statement.....	10

## 1、 Basic information of the equipment





1: Table stand;    2: Machine head;    3: Upper die assembly;    4: Feeding assembly;  
5: Lower die assembly; 6: Dust collecting module;

## 2、Technical parameters of the equipment

MB8016A Hole Impacting Machine		
1	Machine head	Optional pattern sewing machine
2	Working voltage /V	220
3	Working pressure /Mpa	0.5
4	Hole diameter/mm	≤8
5	Hole distance/mm	According to the head X-direction travel

### 3、Safety precautions

#### Considerations for safe use of automata

 危険	<p>1. In order to prevent accidents caused by electric shock, please do not open the cover of the electrical box of the motor or touch the parts in the electrical box when the power is connected.</p>
 注意	<p>1. In order to prevent personal injury, please do not operate the machine in the state of removing the belt guard, finger protector and other safety devices.</p> <p>2. In order to avoid being involved in the machine's personal accident, please do not let your fingers, hair, clothes near the pulley, v-belt, motor, and do not put items on it during the operation of the sewing machine.</p> <p>3. To prevent personal injury, please do not put your finger near the needle when turning on the power or running the machine.</p> <p>4. In order to prevent personal injury, please do not put your fingers in the wire pole guard during the operation of the sewing machine.</p> <p>5. When the machine is running, it turns at a high speed. To prevent damage to the hand, never let the hand near the cutter during operation. In addition, when changing the cable, please be sure to turn off the power.</p> <p>6. In order to prevent personal injury, please be careful not to pinch your fingers when the machine moves up and down or when you return to the original position.</p> <p>7. Please do not cut off the power or air supply while the machine is running.</p> <p>8. In order to prevent accidents caused by sudden starting, please remove the cloth guide when the preparation work is finished and the sewing state is reached.</p> <p>9. In order to prevent accidents caused by electric shock, please do not operate the sewing machine when the ground wire of the power supply is removed.</p> <p>10. In order to prevent accidents caused by electric shock and damage to electrical parts, be sure to turn off the power switch before inserting or unplugging the power plug.</p> <p>11. In order to prevent accidents caused by damage of electrical parts, please stop the operation for safety when it thunders and pull the power plug.</p> <p>12. In order to prevent accidents caused by damage to electrical parts, condensation will occur when moving from a cold place to a warm place immediately, so please wait until the water drops dry before switching on the power.</p> <p>13. As this product is a precision machine, please pay full attention to it during operation, do not splash water or oil on the machine, and do not let the machine fall and give the machine impact.</p> <p>This machine is A class A industrial machine. The use of this machine in the home environment may cause the phenomenon of radio interference. At this point, please take appropriate measures to solve the problem of radio interference.</p> <p>15. After the power switch is turned off when the accumulator moves, the accumulator lever moves, so please be careful not to clip your finger, etc.</p>

	<p>16. When the power switch is turned off during the foot press action, please be careful not to pinch your fingers.</p>
--	---

	<p>17. During folding operation, please be careful not to clip the cylinder to your finger when putting your finger into the folding machine.</p>
--	---

**\* important safety information:**

- ✓ improper operation of the machine may cause personal injury. Please read this instruction carefully and operate correctly before operation.
- ✓ Please ventilate the machine before it is officially powered on.
- ✓ do not turn on the internal parts of the electric cabinet or touch screen while the power is on.
- ✓ this machine should be used after receiving training or under special instruction to ensure the safety of the user.



#### 4、 key function description

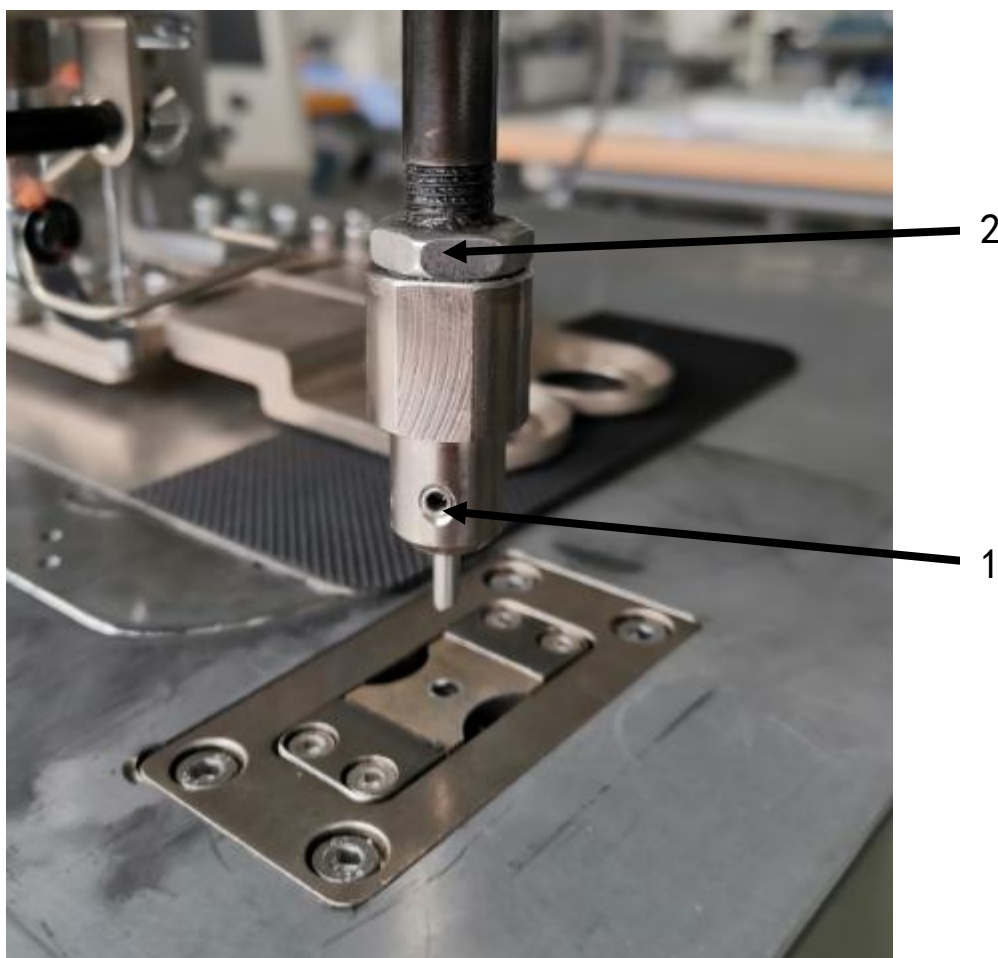
Refer to the description of the keys of the optional pattern machine head

#### 5、 Operating instructions

Refer to the operating instructions of the optional pattern machine head.

#### 6、 Debugging method

##### 6.1 Replacement of upper die holder and punch



- 1、 Loosen the No. 1 screw to replace the punch pin.。
- 2、 Tighten the No. 2 nut to remove the punch holder.。

## 6.2 Replacement of the lower die



- 1、 Remove the 4 screws installed by the compression block to replace the lower die. 。



**\* Note: Before operation, please pull down the punch pin into the hole of the lower die in the unvented state to prevent the mold from being damaged due to the misalignment of the upper and lower molds.**

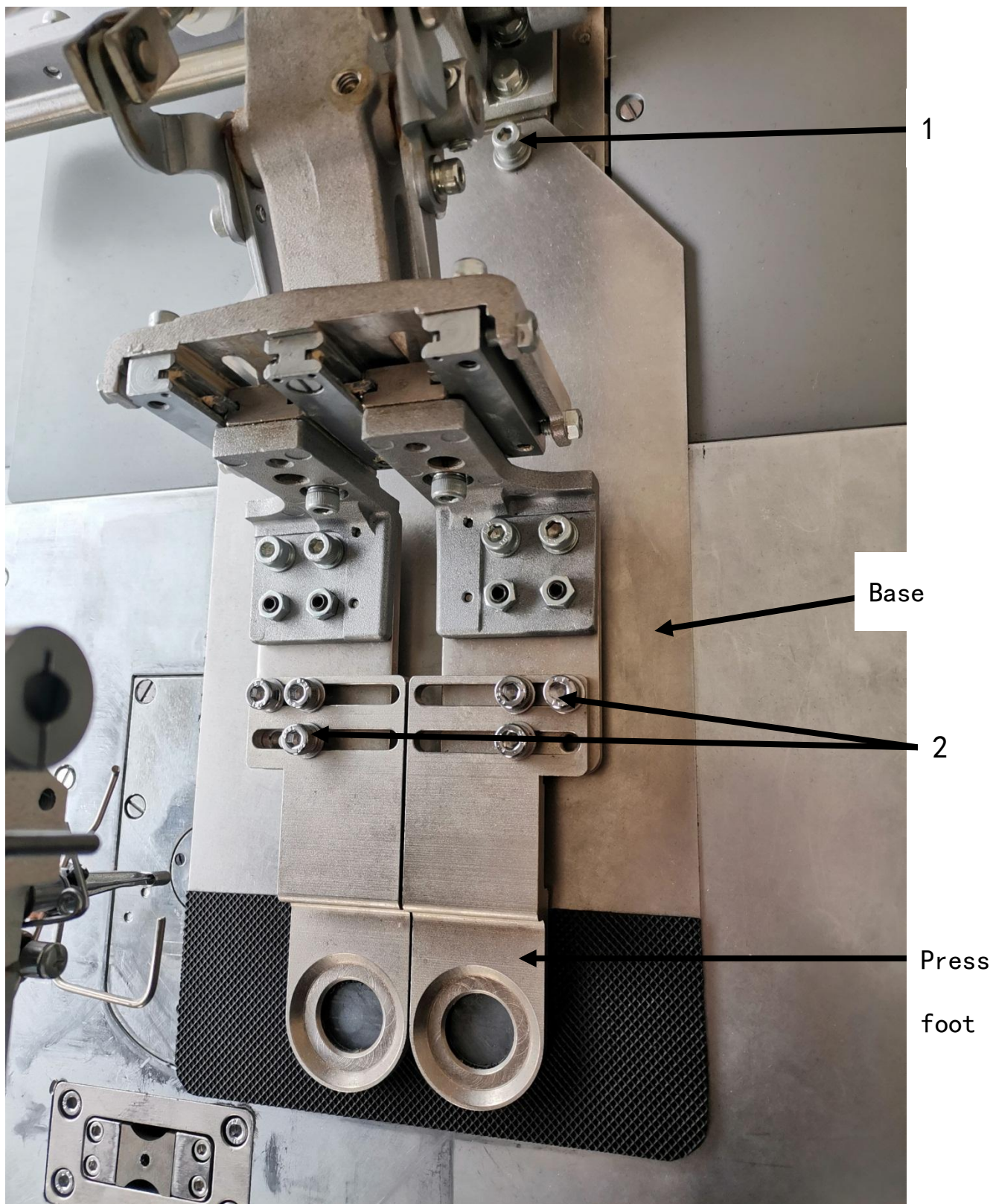
### 6.3 Position adjustment of cylinder magnetic switch



1、 Under normal circumstances, the induction light of the magnetic switch corresponding to the extended and retracted position of the cylinder is on. If the induction light of the magnetic switch does not light up at the corresponding position, please loosen the screw on the magnetic switch to adjust its up and down position.



### 6. 4 Hole distance adjustment of feed assembly



Adjustment step:

- 1、 According to the requirements corresponding to the size, replace the base plate with screw 1, and then tighten the screw slightly.
- 2、 Loosen the screw 2 and adjust the presser foot left and right to align the presser foot hole with the hole of the lower base plate.
- 3、 Lock screw 1 and screw 2.

## 7、Electrical wiring

8016A	Port	TO ZERO STATUS
Punching	J1	OFF
	J2	OFF

## 8、Optional device

- 1、Pattern sewing machine head: according to customer demand.
- 2、Table stand: Welding stand + compact laminate table;  
Normal stand+ wooden table.

## 9、Accessories box details

Head with accessories.

## 10、Common problems and Solutions

- 10.1. See the table below for common problems and Solutions
- 10.2. For other page problems, please refer to the manual of the machine head

Fault phenomenon	Image	Cause Analysis	Solutions
Fabric can't be disconnected	/	Check whether the upper and lower dies are blunt	Replace punching die

## 11、Daily maintenance requirements

Refer to the head description.

## 12、 Knowledge product protection statement

MB8016A Hole impacting machine was designed by Changzhou wisdom & valley Electric Technology Co., Ltd.。 The intellectual property rights of this achievement belong to Changzhou wisdom & valley Electric Technology Co., Ltd. and are protected by national intellectual property laws and regulations. Without the written permission of the right holder, the patented technology of the achievement shall not be implemented, and the information related to the achievement shall not be copied, sold or disseminated through the network. For any illegal infringement, Changzhou wisdom & valley Electric Technology Co., Ltd. will pursue its legal responsibility according to law.